

**2008 National EHDI Conference**  
**February 25-26, 2008**



**REACHING FAMILIES IN  
RURAL AREAS**

RIDBC Teleschool is partially funded by the Australian Government under the Stronger Families and Communities Strategy.

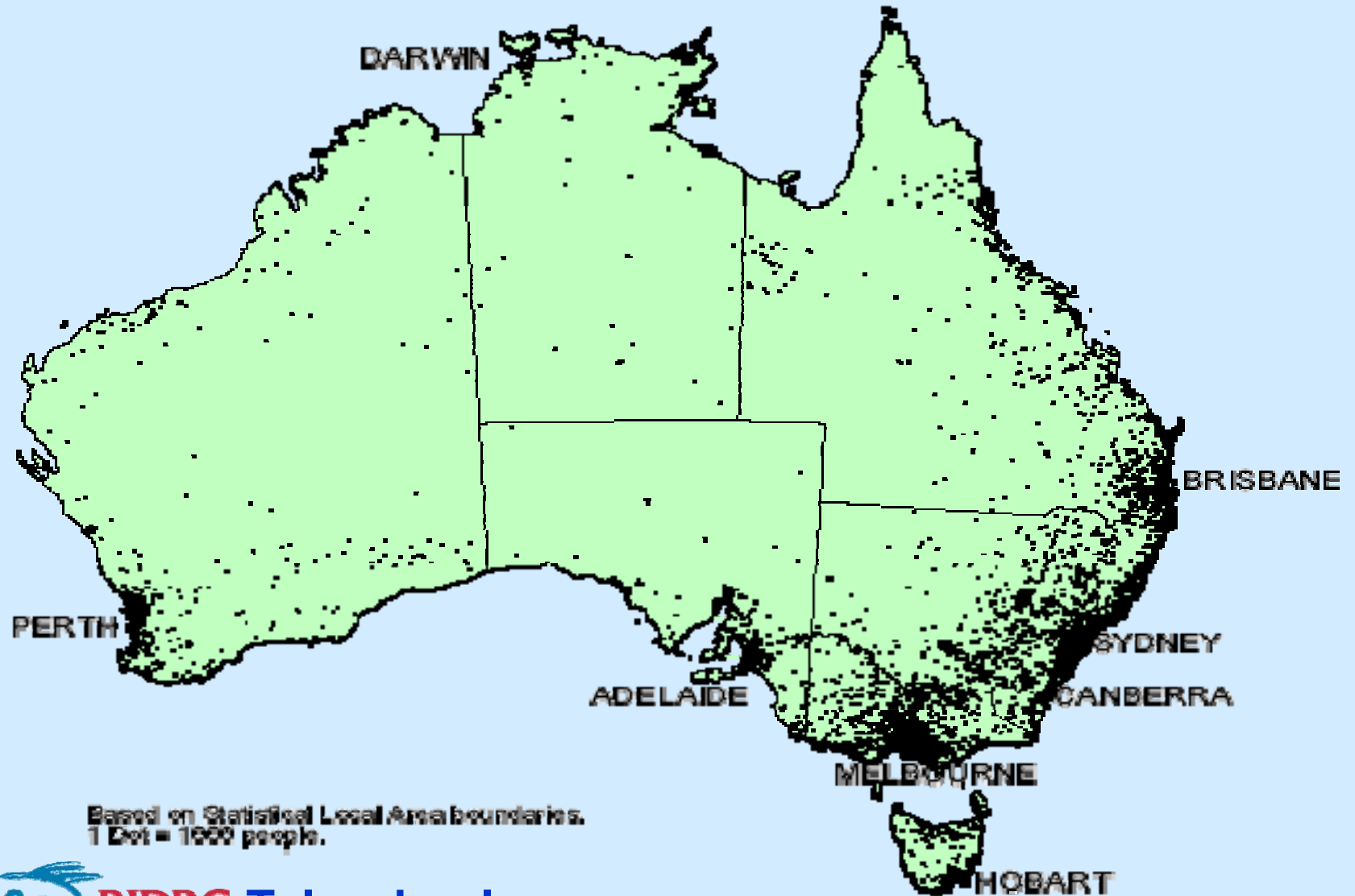


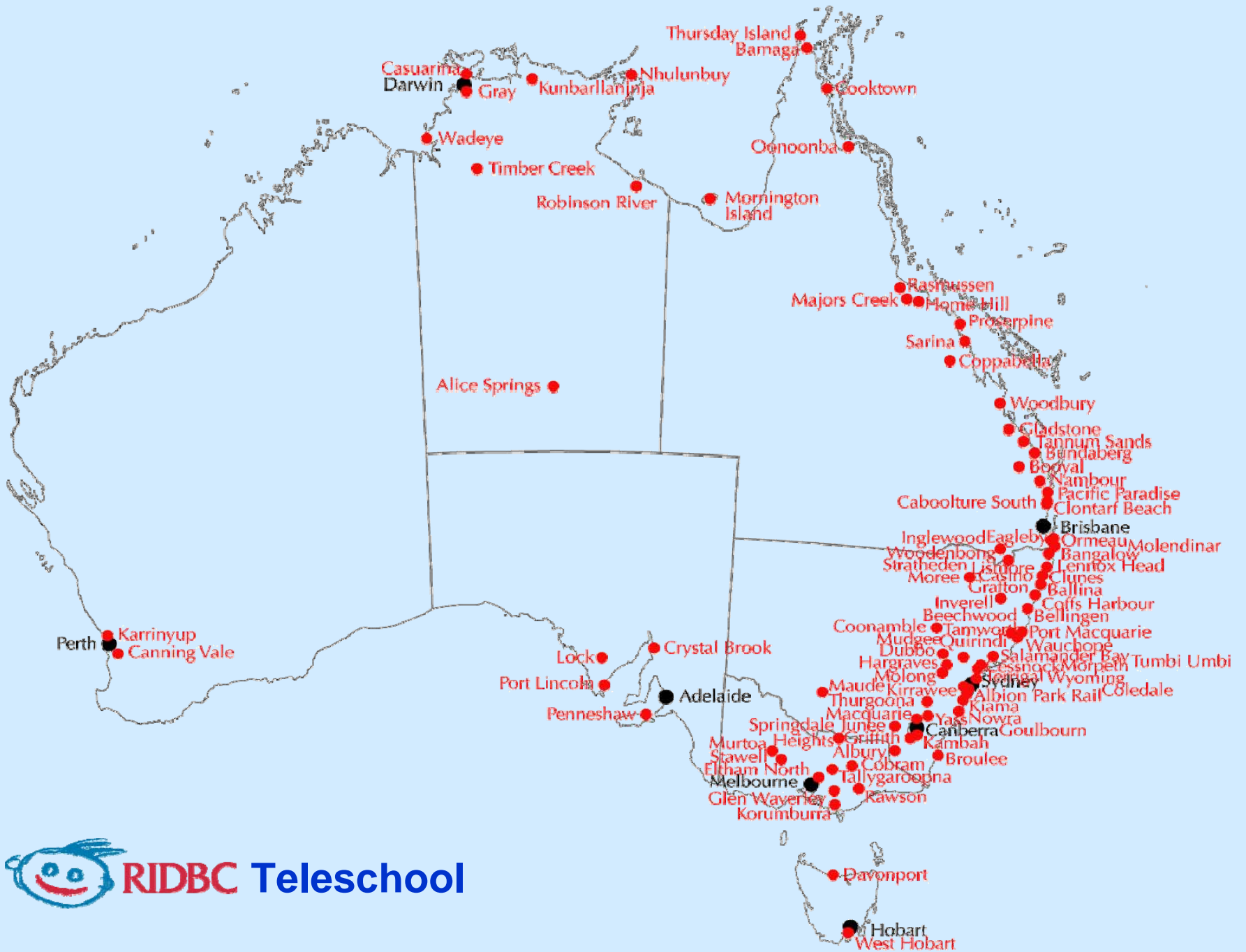
**Royal Institute for Deaf and Blind Children**



# MAP 1: POPULATION DISTRIBUTION

Source ABS, Table 5.13 Distribution of Population Source: 2000 Year Book Australia, [ABS](#) Cat No. 1301.0;









# Family response



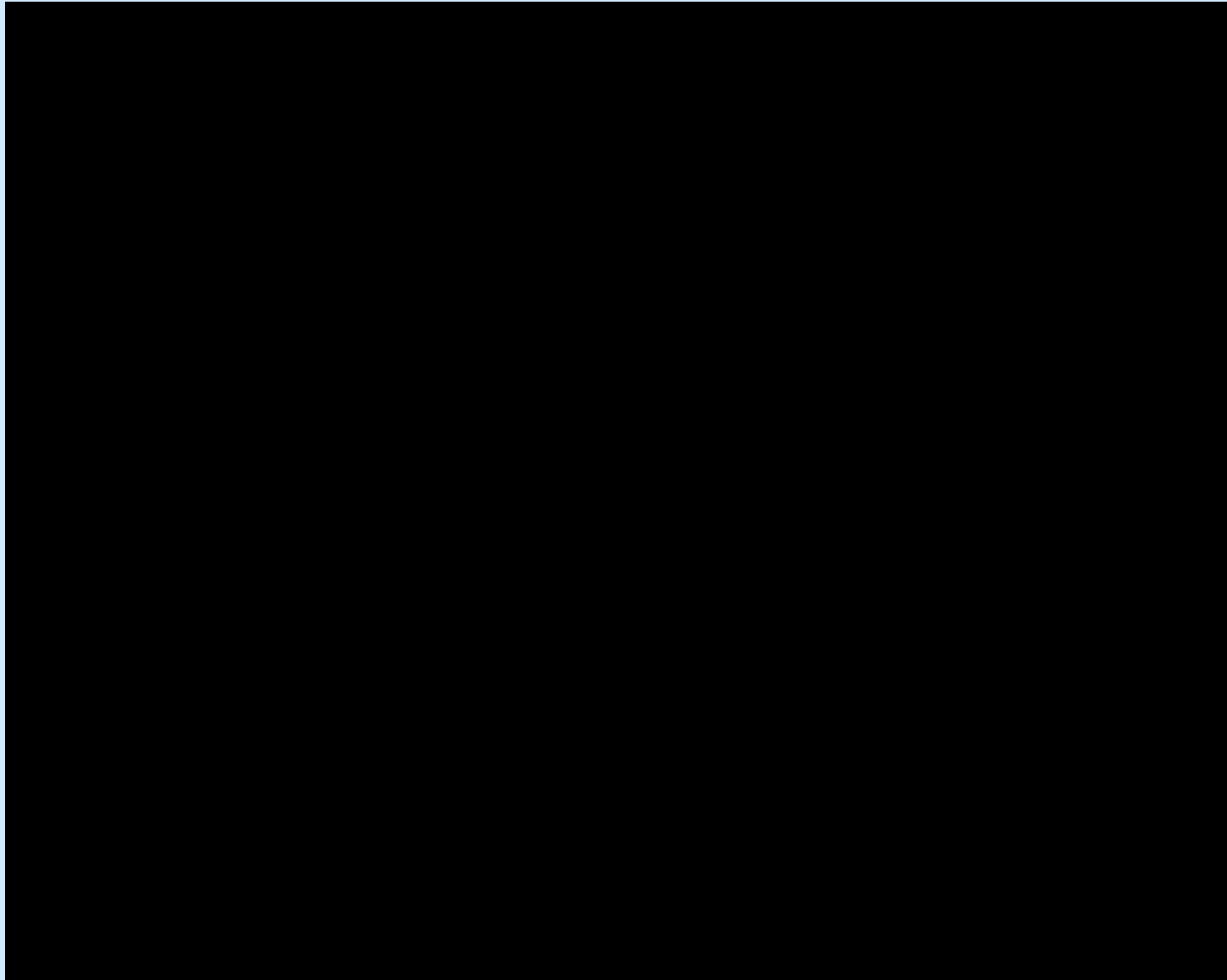
*“It probably means we, as parents, have to do a little bit more work than if we were in the room with the teacher, because then the teacher would do most of it and we’d sit back a bit. But this (VC) is good because it is pushing us forward and actually making us do it.”*

# Technology



- What equipment is used?
- How does it work?
- What about webcams?



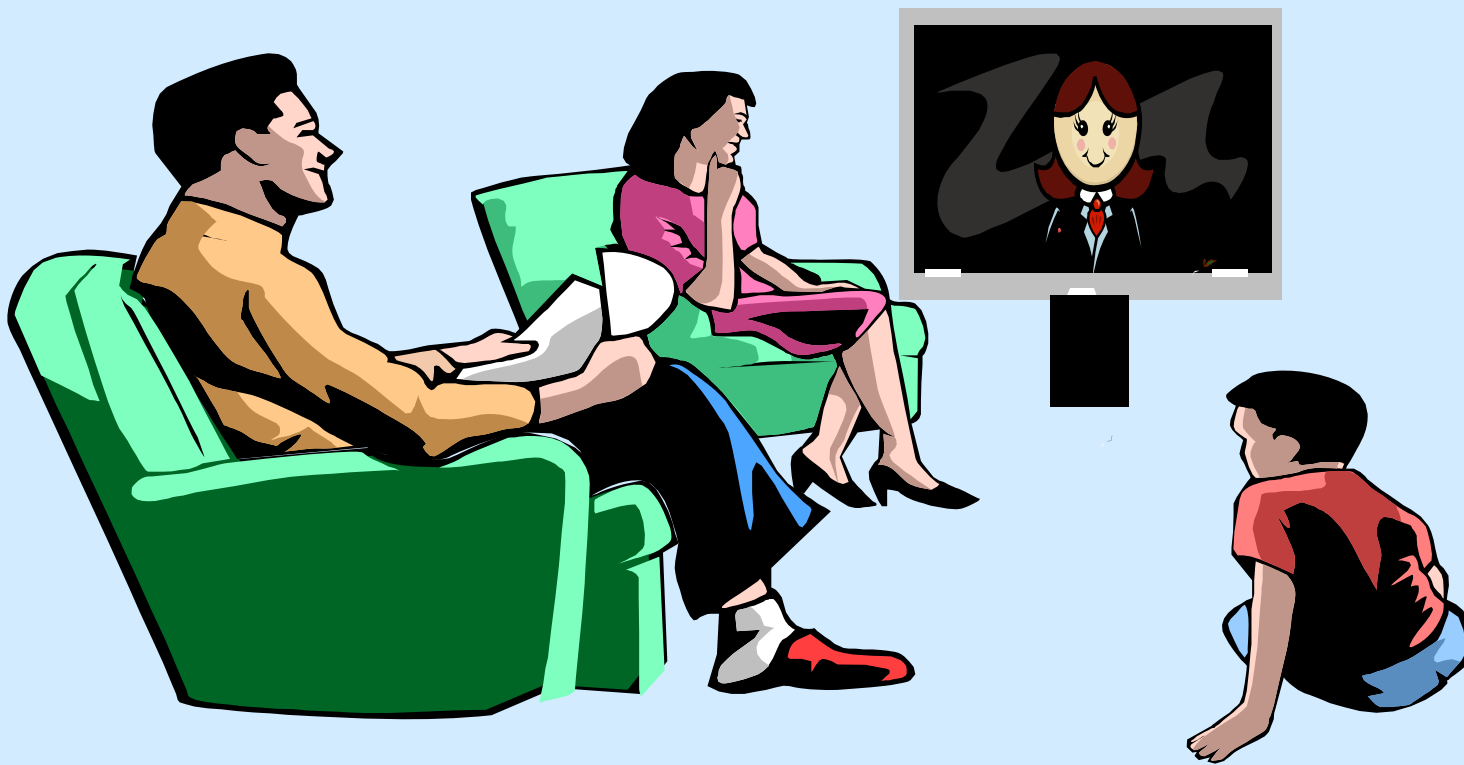


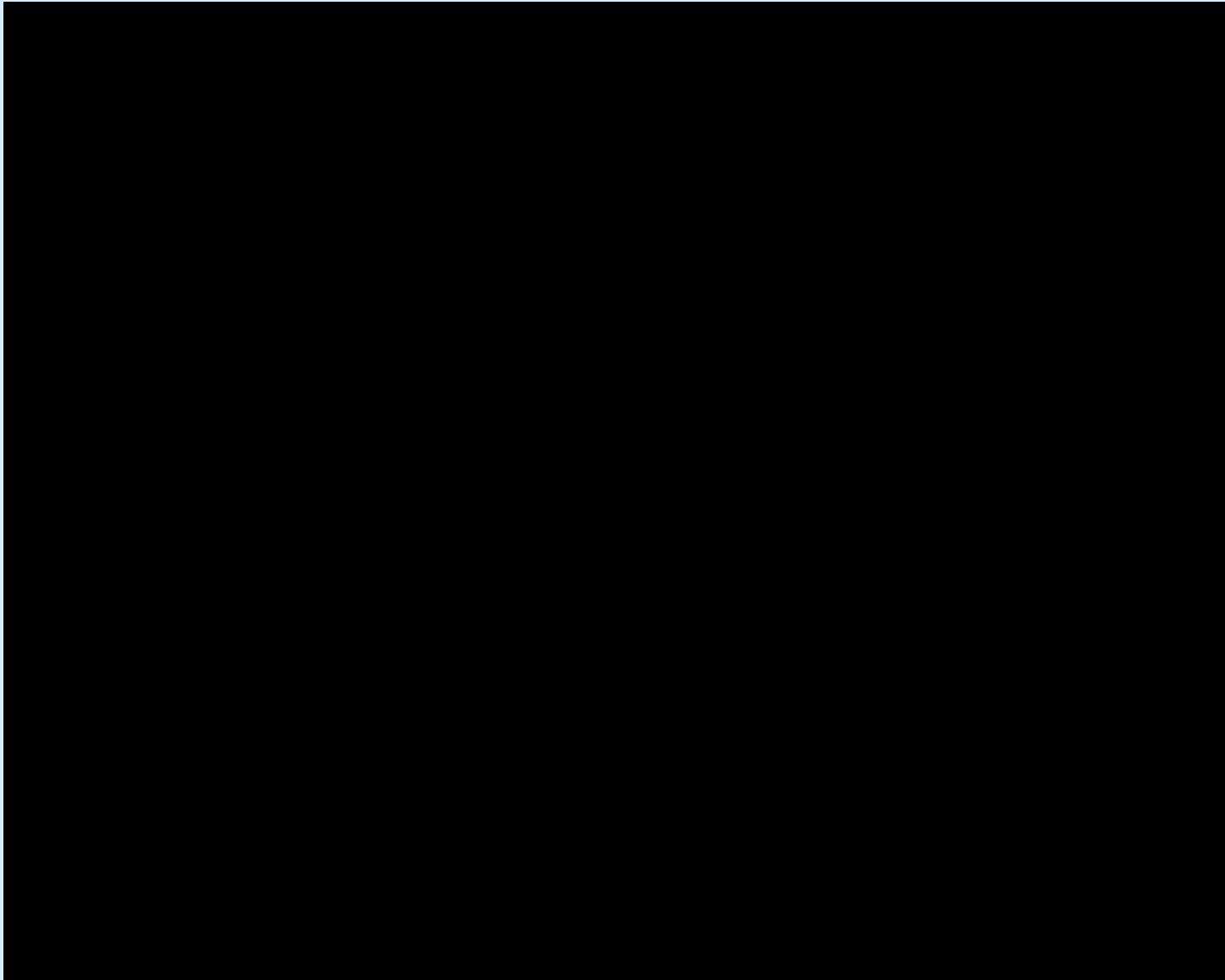
# Family response

*“At first you feel a bit shy. You think, ‘am I reading this book correctly?’ or ‘here’s the toy. What do I do with it?’ But after a while you realise that’s what the teacher is there for - to show you what to do.”*



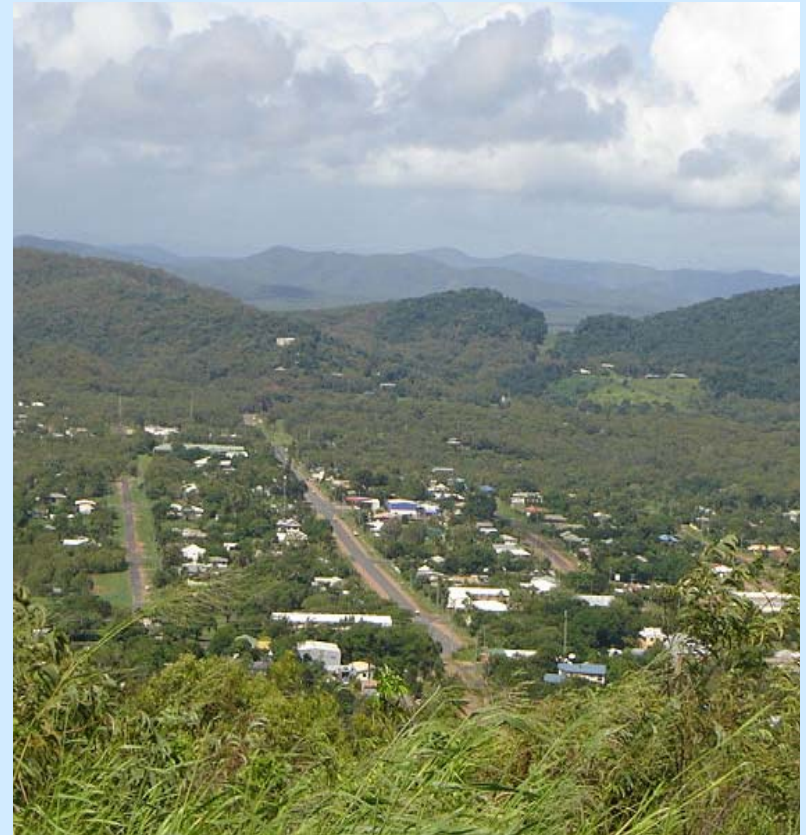
# In home VC

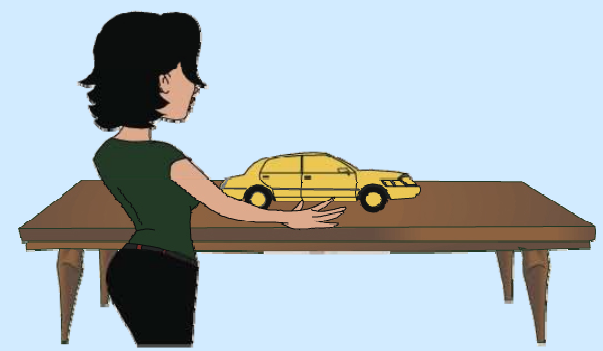
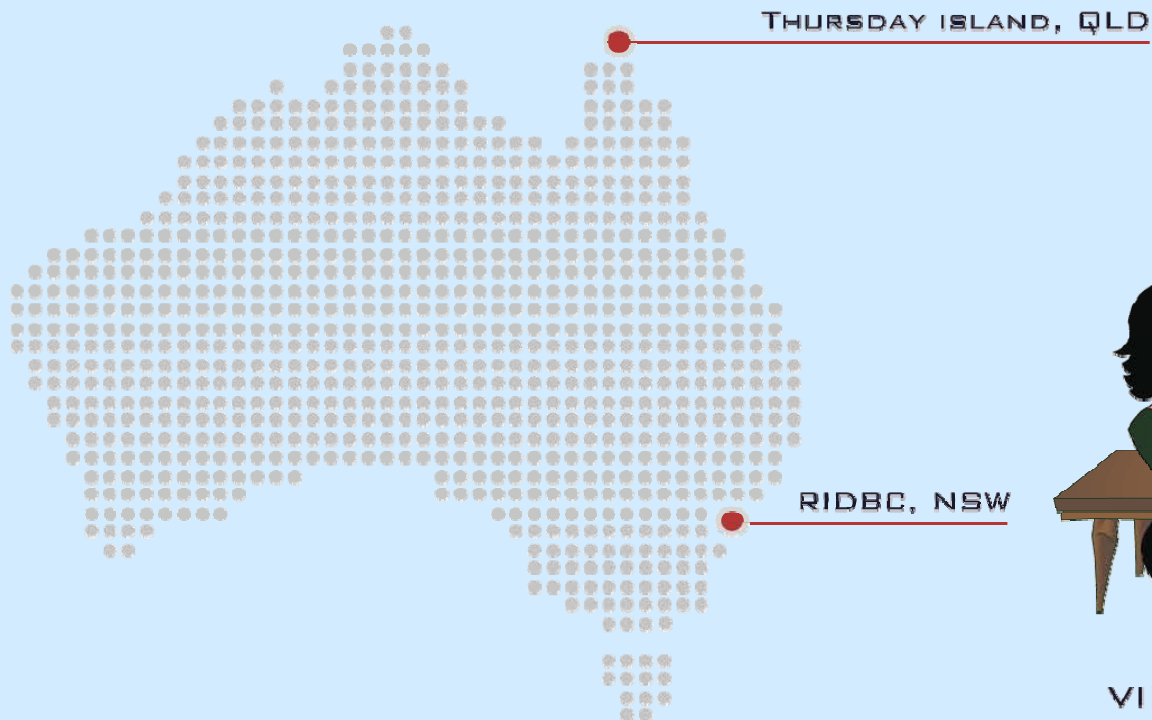




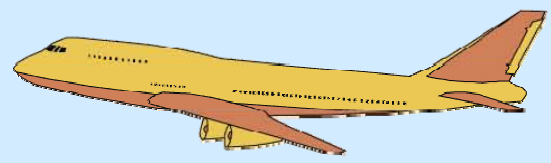
# Family response

*“Videoconferencing is so helpful because it teaches us strategies we can use with J. instead of just observing the professional doing activities with her.”*





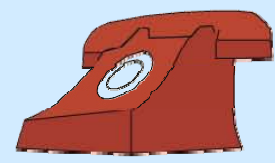
**VIDEOCONFERENCING**



**VISITS TO RIDBC**



**INTERNET BASED COMMUNICATIONS**



**TELEPHONE**



**PACKAGES**



# Family response



*“Seeing you each week has been really good, because all I ever wanted was for someone to give me ideas for things to work on at home with my child.”*



# Telepractice Options

- Mentoring and support for local professionals
- Team meetings, including IFSP
- Assessments
- Sign language instruction
- Parent networking
- Parent attendance at Sydney-based courses

# Developments

- Establishment of a national program
- Shift in pedagogy
- Increase in number of in-home VC links
- Blended service delivery
- Creation of resource library
- Establishment of family networks
- Collaboration with other professionals
- Regularity and continuity of services

For further information please see our website [www.ridbc.org.au](http://www.ridbc.org.au)

Or contact Melissa McCarthy  
[Melissa.mccarthy@ridbc.org.au](mailto:Melissa.mccarthy@ridbc.org.au)

(02) 9872 0821

1 300 131 923



Royal Institute for Deaf and Blind Children